

Series ECW

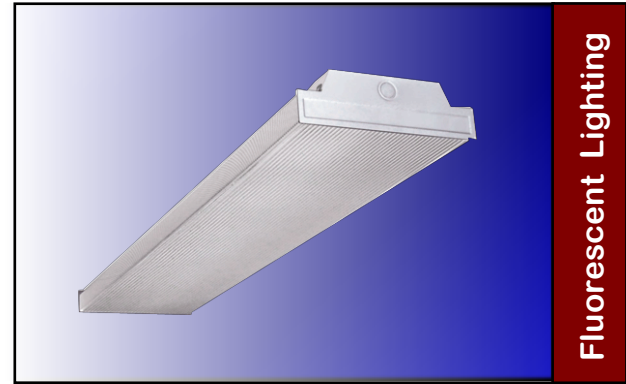
9" Wide Wraparound

Application

Economy grade, shallow, surface mounted wraparound luminaire with low brightness linear sides. For use in applications where low cost, high quality and ease of installation are required. Sleek modern styling.

Features

- Slim and sleek design.
- Clear acrylic diffuser with prismatic bottom and ribbed linear sides.
- Diffuser, self aligns and hinges from either side for easy maintenance.
- Available with 2
- Easy re-lamping and re-ballasting.
- Continuous row mounting capability.
- Steel housing and ends with white enamel finish.
- UL Listed and labeled



Fluorescent Lighting

Construction

Heavy gauge pre-painted high reflectance white steel die-formed housing. White steel end caps. Inspection knockouts provided on 4' units for mounting to junction box. Ballast cover snaps into place eliminating the need for tools when accessing the ballast. Diffuser hinges from either side in a lift and shift manner and is self centering. End caps may be butt-ed together for continuous row mounting. Knockouts are provided for flexible conduit attachment.

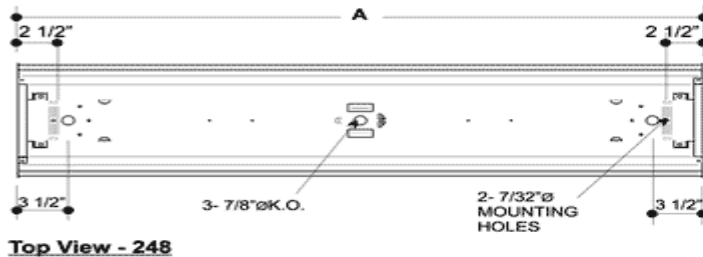
Optics

Wrap-around, extruded clear acrylic diffuser with prismatic bottom and ribbed linear sides, designed for high efficiency and visual comfort.

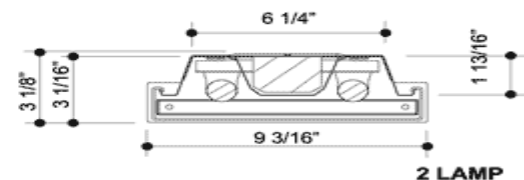
Ordering Information

| Series | Lamp Qty. | Lamp Wattage | Voltage | Ballast Options | Dimming Options | Lamp Options |
|--------|-----------|--------------|-----------|-------------------|-----------------|--------------|
| ECW | 2 | 17 | 120 | BB=Battery Backup | AD7=Advance | LI30=3000k |
| | 3 | 28 | 277 | DS=Dual Switching | Mark 7 | LI35=3500k |
| | 4 | 32 | UNV | | AD10=Advance | LI41=4100k |
| | | FP14 | (120-277) | | Mark10 | LI50=5000k |
| | | FP28 | | | LDE=Lutron | |
| | | FP23 | | | Eco10 | |
| | FP54 | | | LDH=Lutron | | |
| | | | | Hi-Lume | | |

Dimensions



| MODEL | LENGTH |
|----------------------|---------------|
| CROSS SECTION | |
| 2 LAMP | A (in) |
| 248 | 48 |



300-308 Vine Street, NW, Washington, DC
 20012 Office: (202) 882-5181
 Fax: (202) 882-5182

Type:
 Cat. #:
 Project: