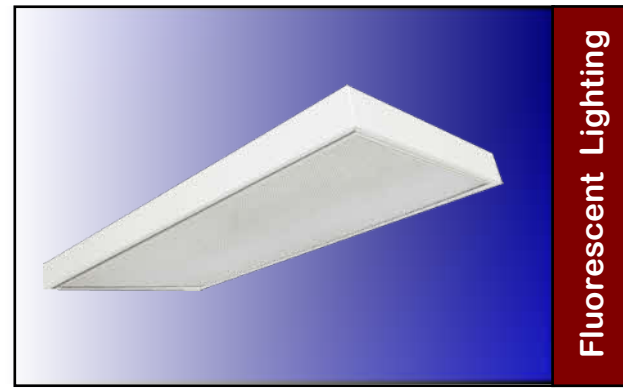


Series SM

Surface Mount

Application Features

- Welded steel housing with white enamel finish.
- Clean appearance. No exposed fasteners.
- Shallow design. Only 4" deep.
- Clear, prismatic, acrylic diffuser.
- Available with 1, 2, 3, 4 or 6 lamps.
- Uses T8 or T5 lamps



Construction

Die formed and spot welded heavy gauge cold rolled steel housing assembly. Spot-welded for rigidity and clean appearance. Ballast cover snaps into place eliminating the need for tools when accessing the ballast. Diffuser lays in directly on to fixture flange on all four sides. Knock-outs are provided for stem mounting. Mounting holes are provided. Powder painted white. visible surfaces.

Optics

Standard diffuser is a clear prismatic, pattern #12 extruded acrylic lens, designed for high efficiency and low glare illumination. Optional shielding is available. Optional reflectors and louvers are available.

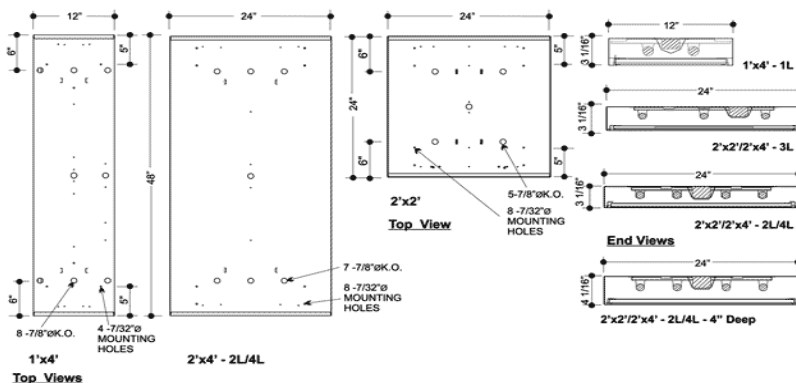
Electrical

All electrical components are UL approved. Sufficient knockouts are provided on the back and ends for connections and through wiring. Approximately 6" ballast leads extend through wiring access cover in order to facilitate external wiring of fixture. Approved to UL standard (damp location).

Ordering Information

Series	Dimensions	LampQty.	Lamp Wattage	Voltage	Ballast Options	Dimming Options	Lens Options	Lamp Options
SM	14=1x4	2	17	120	BB=Battery Backup	AD7=Advance	.125(A12)	LI30=3000k
	22=2x2	3	28	277	DS=Dual Switching	Mark 7	.156 (A19)	LI35=3500k
	24=2x4	4	32	UNV		AD10=Advance	.187(A19)	LI41=4100k
			32U (2x2)	(120-277)		Mark10	.5=.5 eggcrate	LI50=5000k
			32			LDE=Lutron	.5SP=.5 Silver Paracube	
			FP14			Eco10	.75PS=.75 Sliver Paracube	
			FP21			LDH=Lutron	1.5SP=1.5 Silver Paracube	
			FP28			Hi-Lume		
			FP54					

Dimensions



300-308 Vine Street, NW, Washington, DC
 20012 Office: (202) 882-5181 Fax:
 (202) 882-5182

Type:
 Cat. #:
 Project: