

# Series ENF

# Recessed Flanged Troffer

## Applications

Recessed flanged drywall fixture. Available in 2'x2', 2'x4', and 1'x4' configurations.

## Features

- Installation for Drywall ceilings
- Secured by screws
- .100 acrylic prismatic lens standard
- Flush steel door can be latched from either side and locked into position with cam latches.
- Access plate for easy wiring
- Integral earthquake clips standard
- Multiple lamp configurations available
- Pre-lamping available

## Construction

Die formed and embossed, code gauge pre-painted white cold rolled steel housing assembly. Wiring access plate or knockouts are provided on back of housing, for flexible conduit attachment. Knockouts are provided on ends for through wiring. Ballast cover snaps into place eliminating the need for tools when accessing the ballast. Press fit end flanges remove to allow for continuous row mounting.

## Optics

Standard diffuser is a clear, prismatic, pattern #12 extruded acrylic lens, designed for high efficiency and low glare illumination. Optional reflectors available.

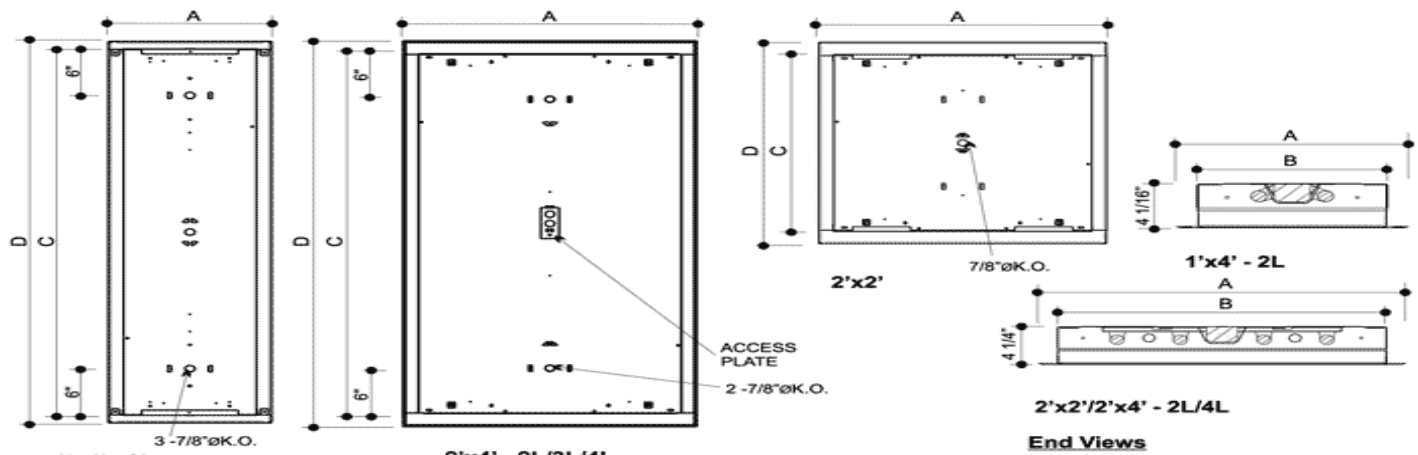


Fluorescent Lighting

## Ordering Information

Series	Dimensions	Lamp Qty.	Lamp Wattage	Voltage	Ballast Options	Dimming Options	Lens Options	Lamp Options
ENF	14=1x4	2	17	120	BB=Battery Backup	AD7=Advance	.125(A12)	LI30=3000k
	22=2x2	3	28	277	DS=Dual Switching	Mark 7	.156 (A19)	LI35=3500k
	24=2x4	4	32U (2x2)	UNV	(120-277)	AD10=Advance	.187(A19)	LI41=4100k
			32			Mark10	.5=.5 eggcrate	LI50=5000k
			FP14			LDE=Lutron	.5SP=.5 Silver Paracube	
			FP28			Eco10	.75PS=.75 Sliver Paracube	
FP23		LDH=Lutron	1.5SP=1.5 Silver Paracube					
FP54			Hi-Lume					

## Dimensions



MODEL CONFIGURATION	A	B	C	D
1'x4'	14 3/8"	11 3/4"	48"	49 7/8"
2'x2'	26 3/8"	23 3/4"	24"	27 3/8"
2'x4'	26 3/8"	23 3/4"	48"	51 3/8"



300-308 Vine Street, NW, Washington, DC  
 20012 Office: (202) 882-5181 Fax:  
 (202) 882-5182

Type:  
 Cat. #:  
 Project: