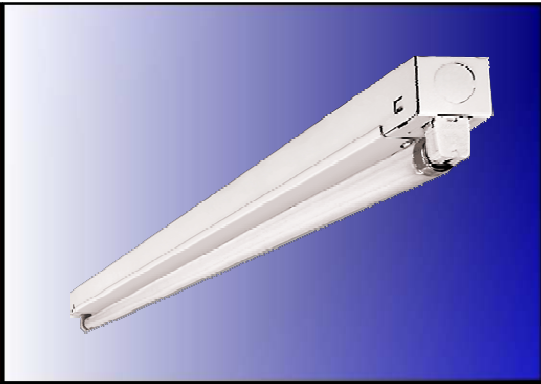


Series CHT5

T5 Strip

Fluorescent Lighting



Application

Fluorescent strip fixture. High efficiency fluorescent T5 technology. For use in indoor applications, such as display cabinets where compact design, high performance and ease of installation are required. Available in lengths from 22 to 60 inches. Comes in 1 or 2 lamp cross-sections.

Features

- Advanced high efficiency T5 technology.
- Shallow design.
- Ideal for display cabinets.
- Continuous row mounting capability.
- Available with 1 or 2 lamps.
- One piece steel housing and ends with white enamel finish.

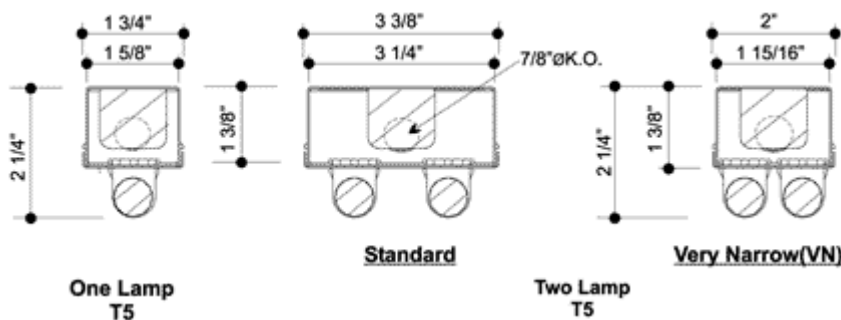
Construction

Die and brake formed, code gauge pre-painted white cold rolled steel housing assembly. One piece folded construction. End caps may be butted together for continuous row mounting. Knockouts are provided for flexible conduit attachment. Pre-painted high reflectance white. Mounting holes are provided. All electrical components are UL approved. Lamp holders are snap-in place, miniature bi-pin with rotary locks. Standard ballasts are electronic rapid start for T5 lamp configurations. The standard voltage is multi-volt. Sufficient knockouts are provided on the back and ends for

Ordering Information

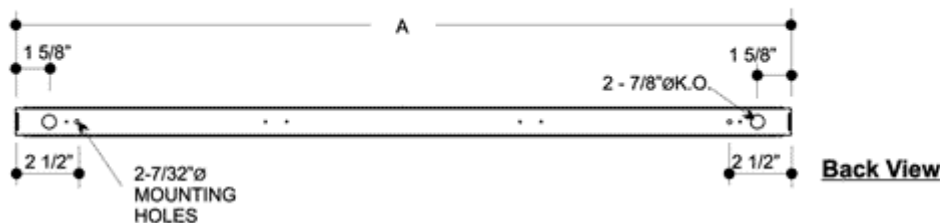
Series	Lamp Qty.	Lamp Wattage	Voltage	Ballast Options	Dimming Options	Lamp Options
CHT5	1	FP14	120	BB=Battery Backup	AD7=Advance	LI30=3000k
		FP21	277	BB=Battery Backup	Mark 7	LI35=3500k
	2	FP28	UNV	(1 Lamp 500 Lum)	AD10=Advance	LI41=4100k
		FP35			Mark 10	
		FP24			LDE=Lutron	
		FP39			Eco10	
		FP54			LDH=Lutron	
		FP80			Hi-Lume	

Dimensions



MODEL CONFIGURATION		Nominal Length	Actual Length
One Lamp	Two Lamp		A (in.)
122	222	2'	22 7/16
134	234	3'	34 1/4
146	246	4'	46 1/16
158	258	5'	57 7/8

Cross Sections



300-308 Vine Street, NW, Washington, DC
 20012 Office: (202) 882-5181
 Fax: (202) 882-5182

Type: _____
 Cat.#: _____
 Project: _____