

# Series CH

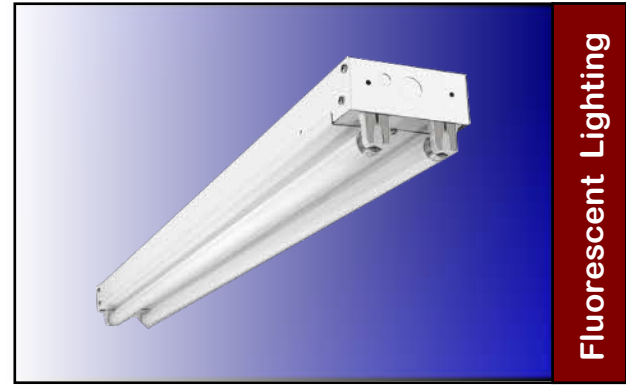
# Unshielded Channel

## Applications

Economical unshielded fluorescent channel. Suitable for numerous indoor applications.

## Features

- End plates can be used as coupler for continuous row-mounting
- UL listed and labeled for damp location



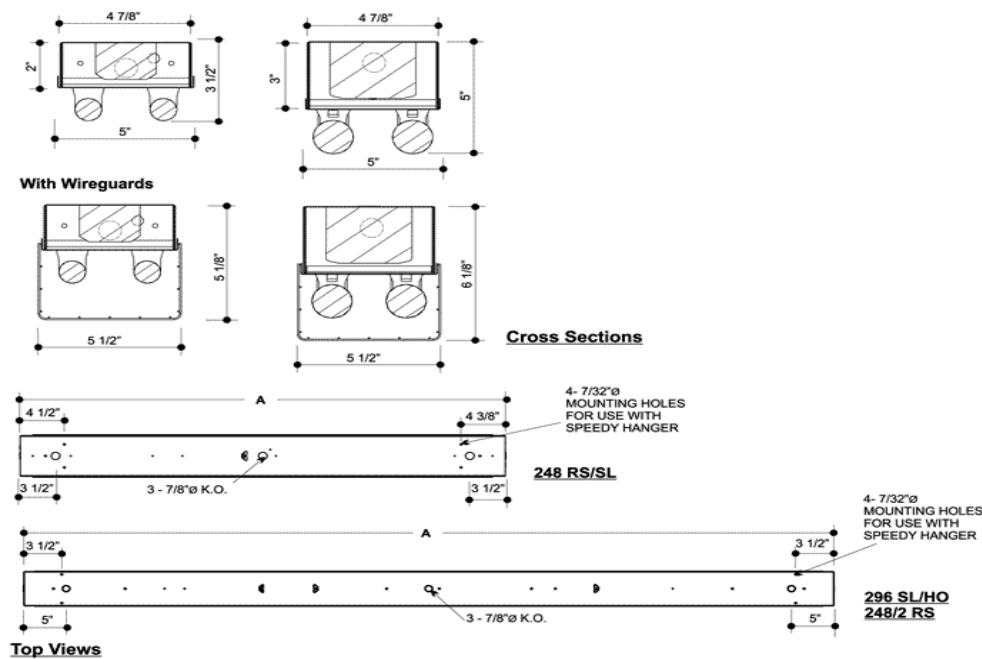
## Construction

Die-formed housing is made from cold rolled steel. Standard finish is baked on high reflectance enamel. End knock-outs are provided for conduit attachment. Stem mounting knock-outs are provided on top of fixture. Pre-drilled holes are provided for installation. Lamp holders provided ensure positive lamp retention. Lamp holders with rotary locks are available.

## Ordering Information

Series	Lamp Qty.	Lamp Wattage	Voltage	Ballast Options	Dimming Options	Lamp Options
CH	1	17	120	BB=Battery Backup (1 Lamp 500 Lum)	AD7=Advance Mark 7	LI30=3000k
	2	25	277		AD10=Advance Mark10	LI35=3500k
	3	32	UNV	LDE=Lutron Eco10	LI41=4100k	
	4	32T (8") FP14 FP21 FP28 FP39 FP54		LDH=Lutron Hi-Lume	LI50=5000k	

## Dimensions



Type:  
Cat. #:  
Project: